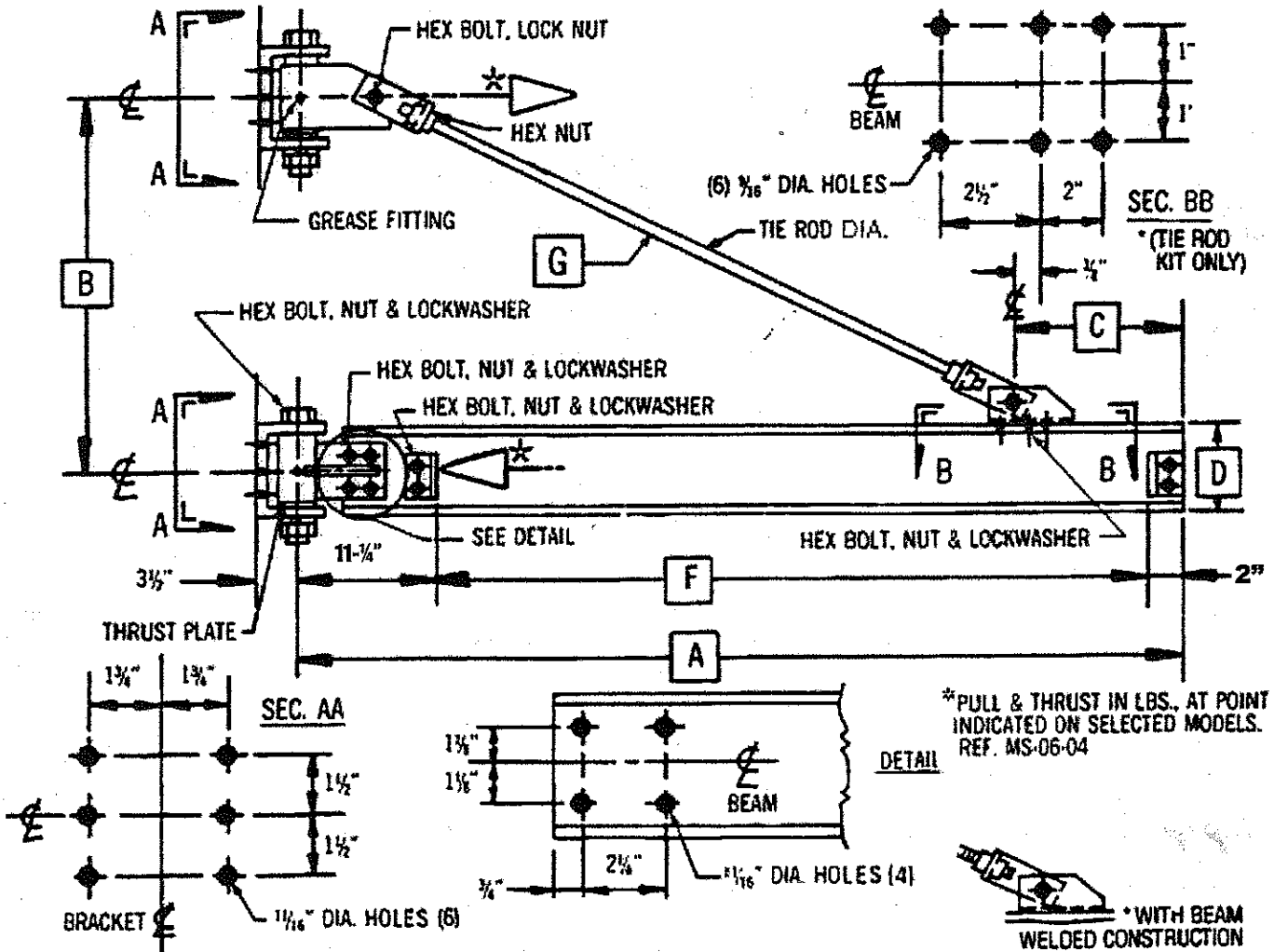


WALL BRACKET JIB CRANE-200° ROTATION MODEL-301-050

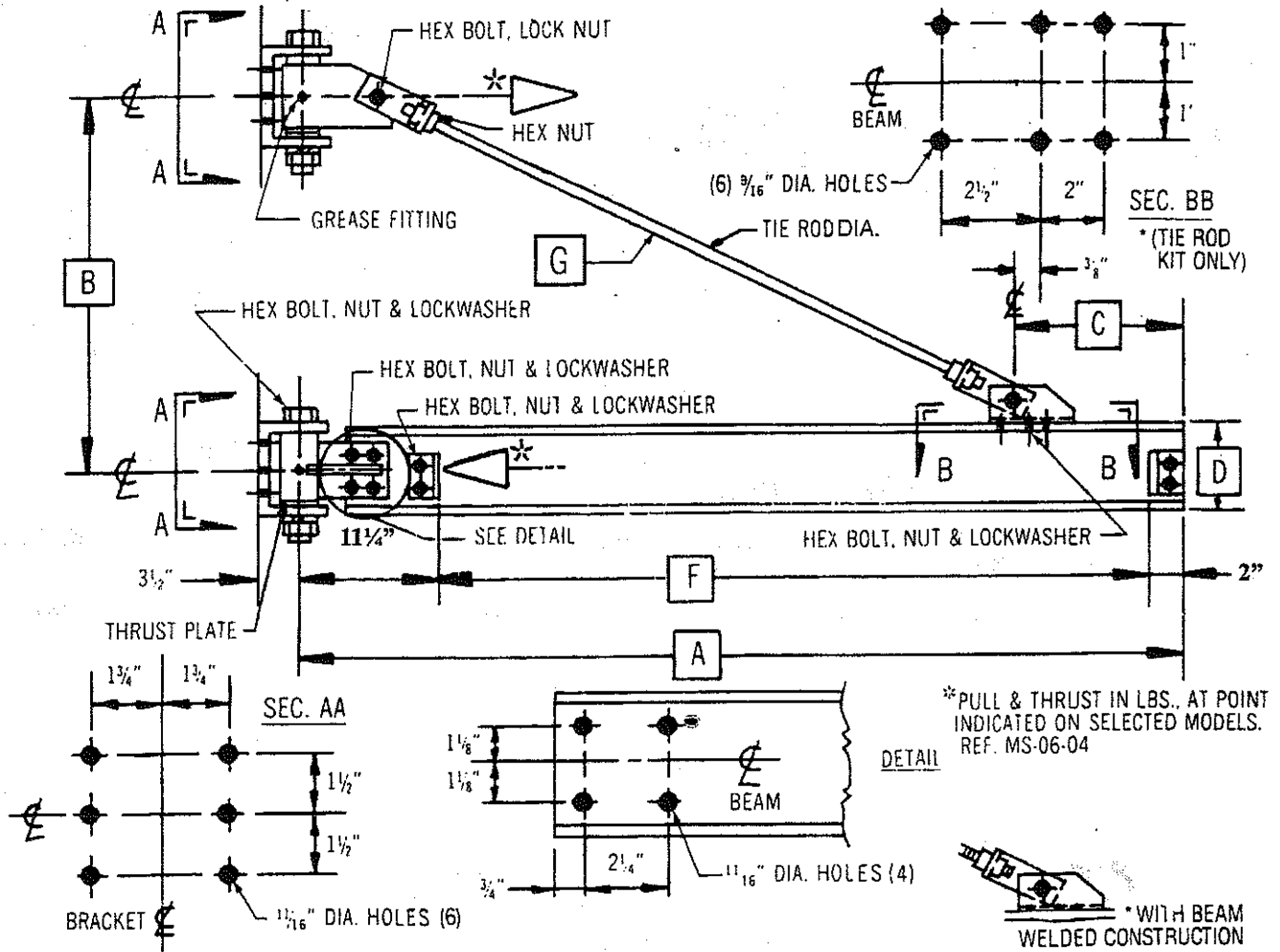


1/2 TON CAPACITY

A	SPAN	8'	10'	12'	14'	16'	18'	20'	22'	24'	26'	28'	30'
B	WALL BRACKET CENTER	2' - 9"	3' - 0"	3' - 9"	4' - 6"	5' - 6"	6' - 0"	6' - 6"	7' - 0"	7' - 6"	8' - 0"	9' - 0"	10' - 0"
C	BEAM BRACKET CENTER	1' - 3"	1' - 6"	1' - 9"	2' - 0"	2' - 0"	2' - 0"	2' - 3"	2' - 3"	2' - 6"	2' - 6"	3' - 0"	3' - 6"
D	BEAM WGT/FT.	6 12.5	6 12.5	6 12.5	6 12.5	6 12.5	8 18.4	10 25.4	10 25.4	10 25.4	10 25.4	12 31.8	12 31.8
E	CAP CHANNEL WGT/FT	-	-	-	-	-	-	-	8 11.5	8 11.5	8 11.5	8 11.5	8 11.5
F	CLEAR SPAN	6' - 9 3/4"	8' - 9 3/4"	10' - 9 3/4"	12' - 9 3/4"	14' - 9 3/4"	16' - 9 3/4"	18' - 9 3/4"	20' - 9 3/4"	22' - 9 3/4"	24' - 9 3/4"	26' - 9 3/4"	28' - 9 3/4"
G	TIE ROD LENGTH	5' - 7"	7' - 4"	9' - 5"	11' - 2"	13' - 4"	15' - 5"	17' - 2"	19' - 3"	21' - 1"	23' - 1"	25' - 1"	26' - 7"



WALL BRACKET JIB CRANE-200° ROTATION MODEL-30I-100 -



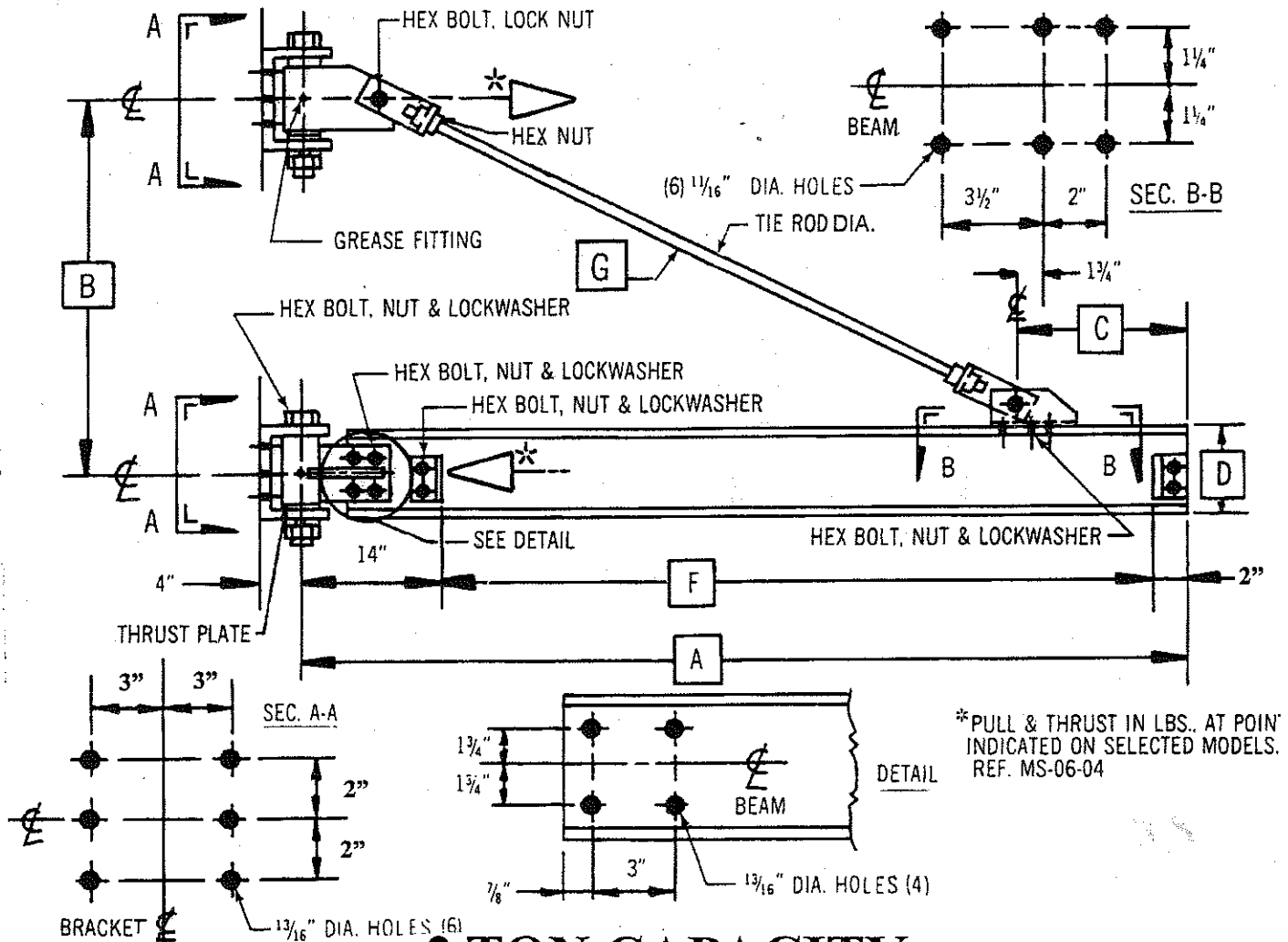
**PULL & THRUST IN LBS., AT POINT INDICATED ON SELECTED MODELS. REF. MS-06-04

1 TON CAPACITY

A	SPAN	8'	10'	12'	14'	16'	18'	20'	22'	24'	26'	28'	30'
B	WALL BRACKET CENTER	2' - 9"	3' - 0"	3' - 9"	4' - 6"	5' - 6"	6' - 0"	6' - 6"	7' - 0"	7' - 6"	8' - 0"	9' - 0"	10' - 0"
C	BEAM BRACKET CENTER	1' - 3"	1' - 6"	1' - 9"	2' - 0"	2' - 3"	2' - 6"	2' - 6"	2' - 9"	3' - 9"	3' - 0"	3' - 6"	3' - 6"
D	BEAM WGT/FT.	6 12.5	6 12.5	6 12.5	8 18.4	8 18.4	8 18.4	10 25.4	10 25.4	10 25.4	10 25.4	12 31.8	12 31.8
E	CAP CHANNEL WGT/FT.	-	-	-	-	-	-	-	6 8.2	6 8.2	6 8.2	8 11.5	8 11.5
F	CLEAR SPAN	6' - 10 3/4"	8' - 10 3/4"	10' - 10 3/4"	12' - 10 3/4"	14' - 10 3/4"	16' - 10 3/4"	18' - 10 3/4"	20' - 10 3/4"	22' - 10 3/4"	24' - 10 3/4"	26' - 10 3/4"	28' - 10 3/4"
G	TIE ROD LENGTH	5' - 7"	7' - 4"	9' - 5"	11' - 2"	13' - 4"	14' - 11"	16' - 11"	19' - 1"	20' - 0"	22' - 7"	24' - 4"	26' - 7"



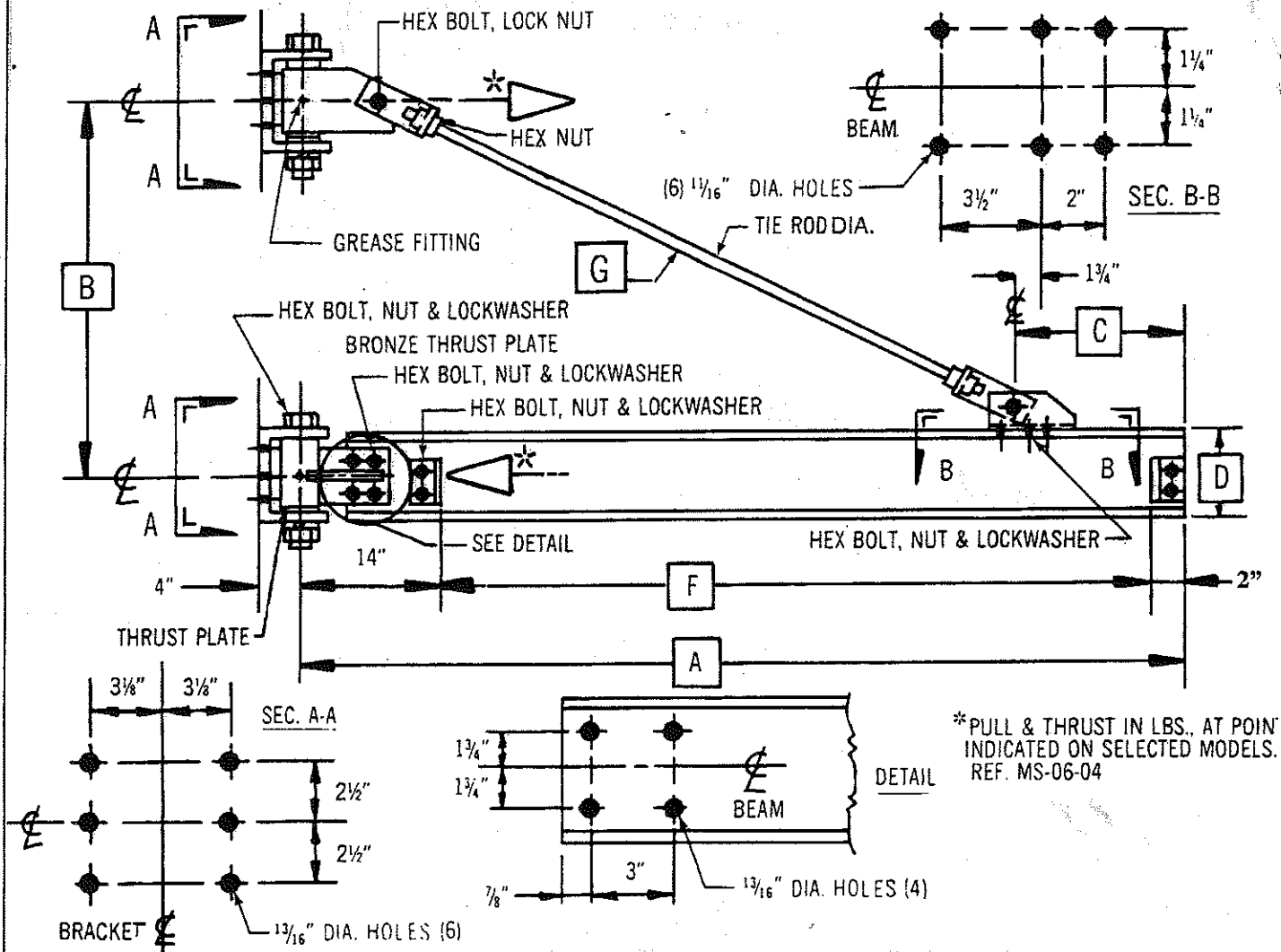
WALL BRACKET JIB CRANE-200° ROTATION MODEL-301-200-



2 TON CAPACITY

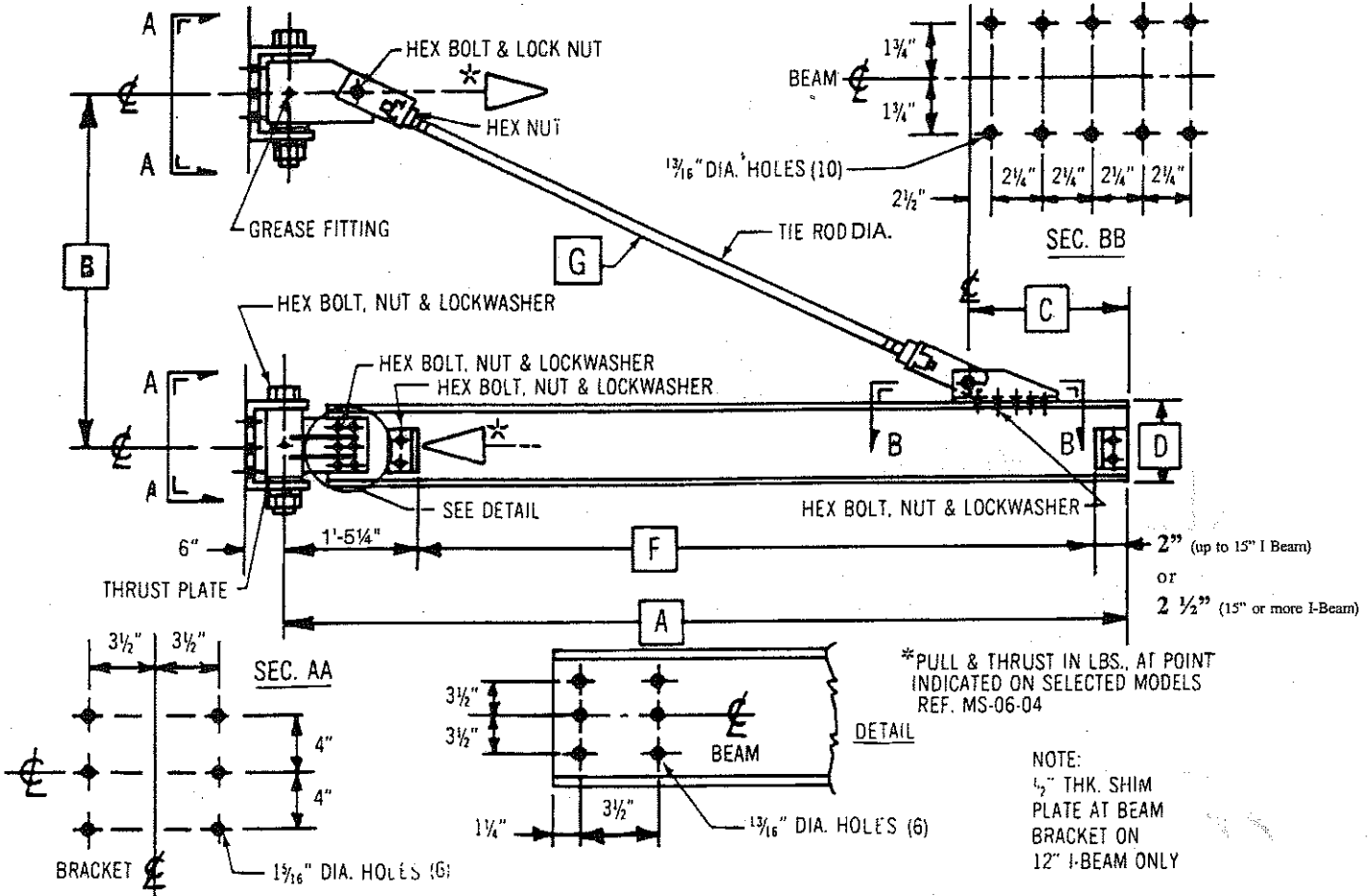
A	SPAN	8'	10'	12'	14'	16'	18'	20'	22'	24'	26'	28'	30'
B	WALL BRACKET CENTER	2' - 9"	3' - 0"	3' - 9"	4' - 6"	5' - 6"	6' - 0"	6' - 6"	7' - 0"	7' - 6"	8' - 0"	9' - 0"	10' - 0"
C	BEAM BRACKET CENTER	1' - 3"	1' - 6"	1' - 9"	2' - 0"	2' - 3"	2' - 3"	2' - 6"	2' - 6"	3' - 6"	3' - 6"	3' - 6"	3' - 0"
D	BEAM WGT/FT.	8 18.4	8 18.4	8 18.4	8 18.4	10 25.4	10 25.4	12 31.8	12 31.8	12 31.8	12 31.8	12 31.8	12 31.8
E	CAP CHANNEL WGT/FT	-	-	-	-	-	-	-	8 11.5	8 11.5	8 11.5	8 11.5	8 11.5
F	CLEAR SPAN	6' - 8"	8' - 8"	10' - 8"	12' - 8"	14' - 8"	16' - 8"	18' - 8"	20' - 8"	22' - 8"	24' - 8"	26' - 8"	28' - 8"
G	TIE ROD LENGTH	5' - 11"	7' - 8"	9' - 6"	11' - 5"	13' - 4"	15' - 5"	17' - 2"	19' - 3"	20' - 0"	22' - 7"	24' - 10"	27' - 4"

WALL BRACKET JIB CRANE-200° ROTATION MODEL-301-300 -



A	SPAN	8'	10'	12'	14'	16'	18'	20'	22'	24'	26'	28'	30'
B	WALL BRACKET CENTER	2'-9"	3'-3"	4'-0"	4'-9"	5'-6"	6'-3"	7'-0"	7'-9"	8'-6"	9'-3"	10'-0"	11'-0"
C	BEAM BRACKET CENTER	1'-3"	1'-6"	1'-9"	2'-0"	2'-3"	2'-3"	2'-6"	2'-6"	3'-6"	3'-0"	3'-0"	3'-0"
D	BEAM WGT./FT.	8 18.4	8 18.4	8 18.4	8 18.4	10 25.4	10 25.4	12 31.8	12 31.8	12 31.8	12 31.8	12 31.8	12 31.8
E	CAP CHANNEL WGT/FT	-	-	-	-	-	-	8 11.5	8 11.5	8 11.5	8 11.5	8 11.5	8 11.5
F	CLEAR SPAN	6'-8"	8'-8"	10'-8"	12'-8"	14'-8"	16'-8"	18'-8"	20'-8"	22'-8"	24'-8"	26'-8"	28'-8"
G	TIE ROD LENGTH	5'-2"	7'-0"	8'-10"	10'-9"	12'-7"	14'-9"	16'-8"	18'-9"	20'-0"	22'-6"	24'-8"	26'-11"

WALL BRACKET JIB CRANE-200° ROTATION MODEL-301-500-



5 TON CAPACITY

A	SPAN	8'	10'	12'	14'	16'	18'	20'	22'	24'	26'	28'	30'
B	WALL BRACKET CENTER	3' - 0"	3' - 3"	4' - 0"	4' - 9"	5' - 6"	6' - 3"	7' - 0"	7' - 9"	8' - 6"	9' - 3"	10' - 0"	11' - 0"
C	BEAM BRACKET CENTER	1' - 3"	1' - 6"	1' - 9"	2' - 0"	2' - 3"	2' - 3"	2' - 6"	2' - 6"	3' - 6"	3' - 6"	3' - 6"	3' - 6"
D	BEAM WGT./FT.	12 31.8	12 31.8	12 31.8	12 31.8	15 42.9	15 42.9	15 42.9	15 42.9	15 42.9	15 42.9	15 42.9	15 42.9
E	CAP CHANNEL WGT./FT.	-	-	-	-	-	-	-	10 15.3	10 15.3	10 15.3	10 15.3	10 15.3
F	CLEAR SPAN	6' - 4 3/4"	8' - 4 3/4"	10' - 4 3/4"	12' - 4 3/4"	14' - 4 1/4"	16' - 4 1/4"	18' - 4 1/4"	20' - 4 1/4"	22' - 4 1/4"	24' - 4 1/4"	26' - 4 1/4"	28' - 4 1/4"
G	TIE ROD LENGTH	4' - 6"	6' - 5"	8' - 4"	10' - 3"	11' - 10"	13' - 6"	15' - 2"	17' - 4"	19' - 6"	21' - 7"	23' - 9"	25' - 11"